

**OUTDSHOORN**

Munisipaliteit • Umasipala • Municipality



**A TOWN TO WORK, LEARN, PLAY AND PROSPER**

**VISION:**  
**Prosperity for All**

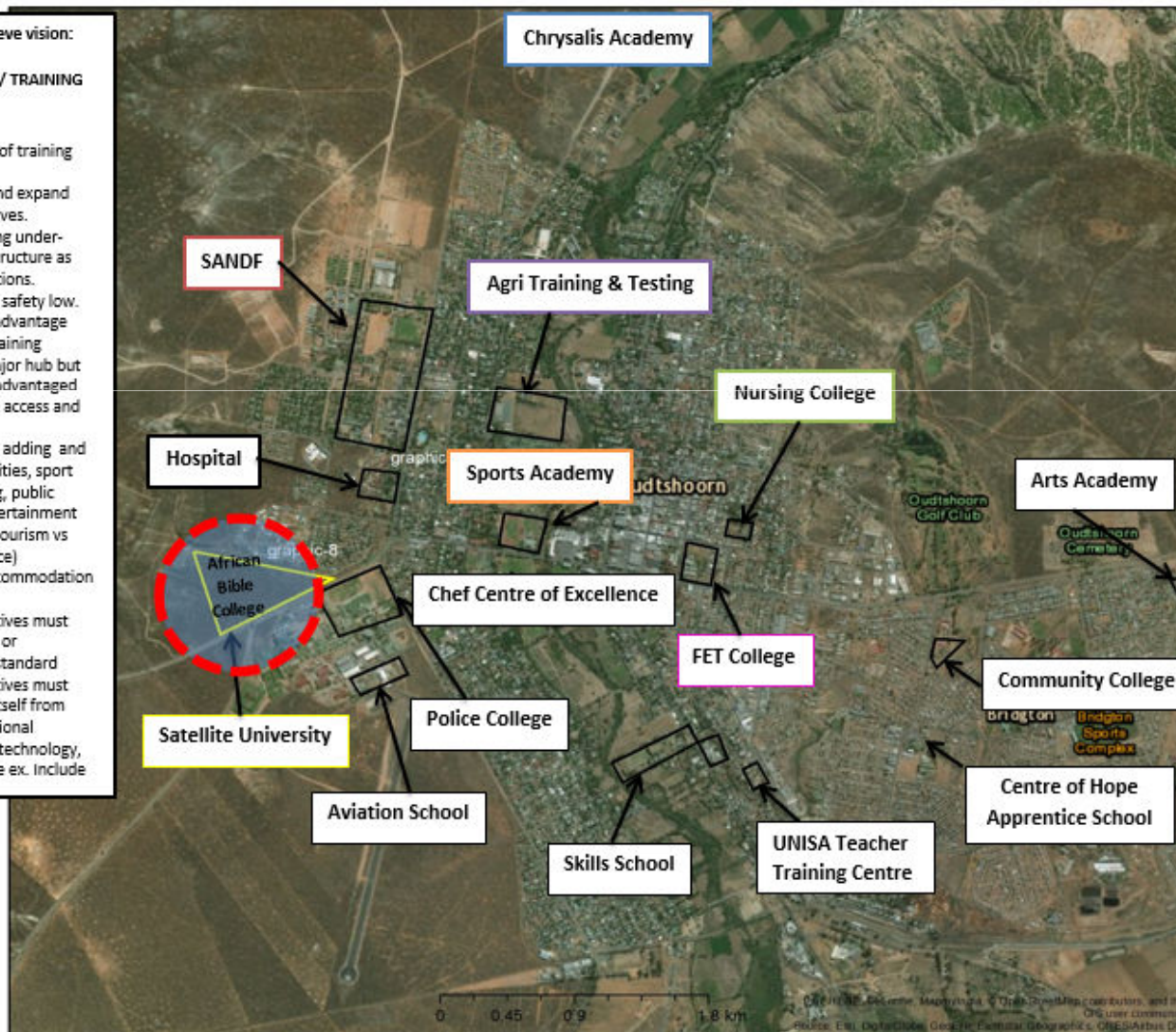
**SLOGAN:**

**A Town to work in, Learn, Play and Prosper**

**“A knowledge economic town,  
offering opportunities for training  
and skills development”**

# Spatial Map of Training Facilities

- Strategy to achieve vision:
- ODN EDUCATION/ TRAINING HUB**
1. Development of training precinct.
  2. Consolidate and expand current initiatives.
  3. Identify existing under-utilized infrastructure as potential locations.
  4. Keep cost and safety low. Competitive advantage
  5. Consolidate training precinct as major hub but expand to disadvantaged areas advance access and LED
  6. Develop value adding and support amenities, sport field, shopping, public transport, entertainment for students (tourism vs student balance)
  7. Affordable accommodation facilities
  8. Training initiatives must meet national or international standard
  9. Training initiatives must differentiate itself from other conventional training. New technology, tourism course ex. Include



## Spatial Map of Training Facilities

- Chrysalis Academy:** Skills training centre 200 students in welding, brick laying etc. Location - De Hoek resort.
- SANDF:** Military Infantry School training 2000 recruits annually as military officials. Head Office in Park Road South
- Agri Training & Testing Facility:** Centre managed by WC Dept. Agriculture. Training farmers short courses. Location Van der Riet Street
- Nursing College:** Facility trained 300 students as qualified nurses for period 1 year. Private training facility ACVV located High Street
- Sports Academy:** Eden Regional Sports Academy facility located at the De Jager Sports Complex. Training of 148 potential national athlete's in different sport codes.
- Hospital:** Training of 5 doctors annually for period of 2 years doctors from the University of Cape Town. Location Park Way South
- Satellite University:** Not yet operational. Future planning 10hector site on the R62/ Hospital Extension available to build facilities
- FET College:** South Cape FET College situated in the ODN area High Street. College specialize in Tourism, ECD and training of BEd students +- 300 students.



# Eden Youth (Crysalis) Academy



- Youth development program based on 3-month empowerment training that focuses on the individual's physical, emotional, mental, energetic and spiritual development, which is still unique to our knowledge.
- The Chrysalis Programme is a **preventative** initiative, as opposed to **rehabilitative**.
- EYA is to be established in Oudthoorn for the benefit of youth of the Region.
- Advantage of the Pseudo Military Approach is the benefit of skills training for the participant





# SA Infantry Formation (SANDF)

- Oudtshoorn has a proud history with the SANDF dating back to the Infantry school opening its doors in 1964
- The Infantry schools annually trains 2000 recruits



# Agri Training & Testing Facility

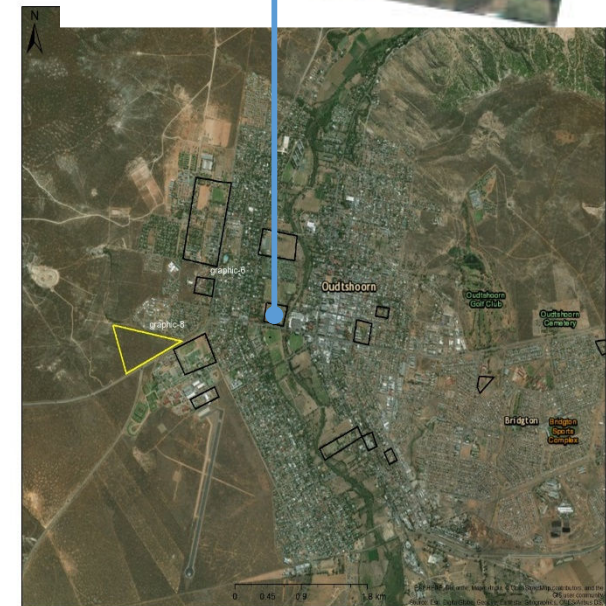


- Centre managed by WC Dept. Agriculture.
- Training farmers short courses.
- Location Van der Riet Street
- Agriculture is one of our main economic drivers
- The further education and training (FET) centre at the Oudtshoorn Research Farm is one of four decentralised centres throughout the Western Cape.
- Offers formal and informal agricultural training to commercial, subsistence and smallholder farmers as well as those working on food security and rural development projects.



# Eden Regional Sports Academy

- The academy is a partnership between the [Oudtshoorn Municipality](#) and the [Department of Cultural Affairs and Sport \(DCAS\)](#)
- The facility located at the De Jager Sports Complex.
- Training of 148 potential national athlete's in different sport codes.
- The District Academy System provides for eight sport codes: athletics, aquatics, baseball, table tennis, boxing, cycling, netball and football.
- Athletes are assisted by qualified biokineticists



# Oudtshoorn Hospital

- Is a Training facility for 5 doctors on an annual basis
- Period of placement is 2 years.
- Location Park Way South



# Nursing College

- Private Training Institute
- Courses:
  - Home Base Care
  - Nursing Aid
  - Staff Nurse





# Satelite University

- Future prospect
- Land available in Hospital Extention
- 10 ha available for development
- Interest shown by US Partner



# South Cape FET College

- South Cape FET College situated in the Adderley Street
- Offers Technical, Vocational Education Training. College and University levels of training

**Vocational: Level 2 – 4**  
Safety in Society  
Hospitality



## N4 – N6 Courses

Marketing Management  
Hospitality and Catering  
Tourism  
Management Assistant  
HR Management  
Financial Management  
Legal Secretary  
Medical Secretary  
Educare



**Unisa Phoundation Phase Teacher Training offered  
from 2018**

# Strategy to achieve Vision

## ODN EDUCATION/ TRAINING HUB

- Development of training precinct.
- Consolidate and expand current initiatives.
- Identify existing under-utilized infrastructure as potential locations.
- Keep cost low for a Competitive advantage
- Consolidate training precinct as major hub but expand to disadvantaged areas

- Develop value adding and support amenities, sport field, shopping, public transport, entertainment for students (tourism vs student balance)
- Affordable accommodation
- Training initiatives must meet national or international standard
- Training initiatives must differentiate itself from other conventional training.
- New technology, tourism courses .
- Include foreign language
- Focus on Apprenticeships as well as learnership

**DANKIE – ENKOSI - THANK YOU!**