

A decorative graphic consisting of multiple parallel, wavy lines of blue dots. The dots are arranged in a way that creates a sense of depth and movement, flowing from the bottom left towards the top right, framing the central text.

ITHUBA-CENTRE®

MULTI RESOURCE TRAINING AND BUSINESS HUB

HELLO!

MY NAME IS

NKOSINATHI OLIVER MABUKANE

BORN AND RAISED IN KNYSNA

I'M THE FOUNDER OF YONA-YETHU INITIATIVE , AND
DEVELOPER OF ITHUBA ARCHITECTURAL HUB MODEL.

BACKGROUND

THIS CONCEPT WAS DEVELOPED THROUGH THE **GREATER KNYSNA INTEGRATED STRATEGIC DEVELOPMENT FRAMEWORK** (ISDF) IN 2015, WHERE I WAS THE OVERALL WINNER.

THIS CONCEPT HAS NOW DEVELOPED IN TO A **DISTRICT DEVELOPMENT STRATEGY MODEL**.

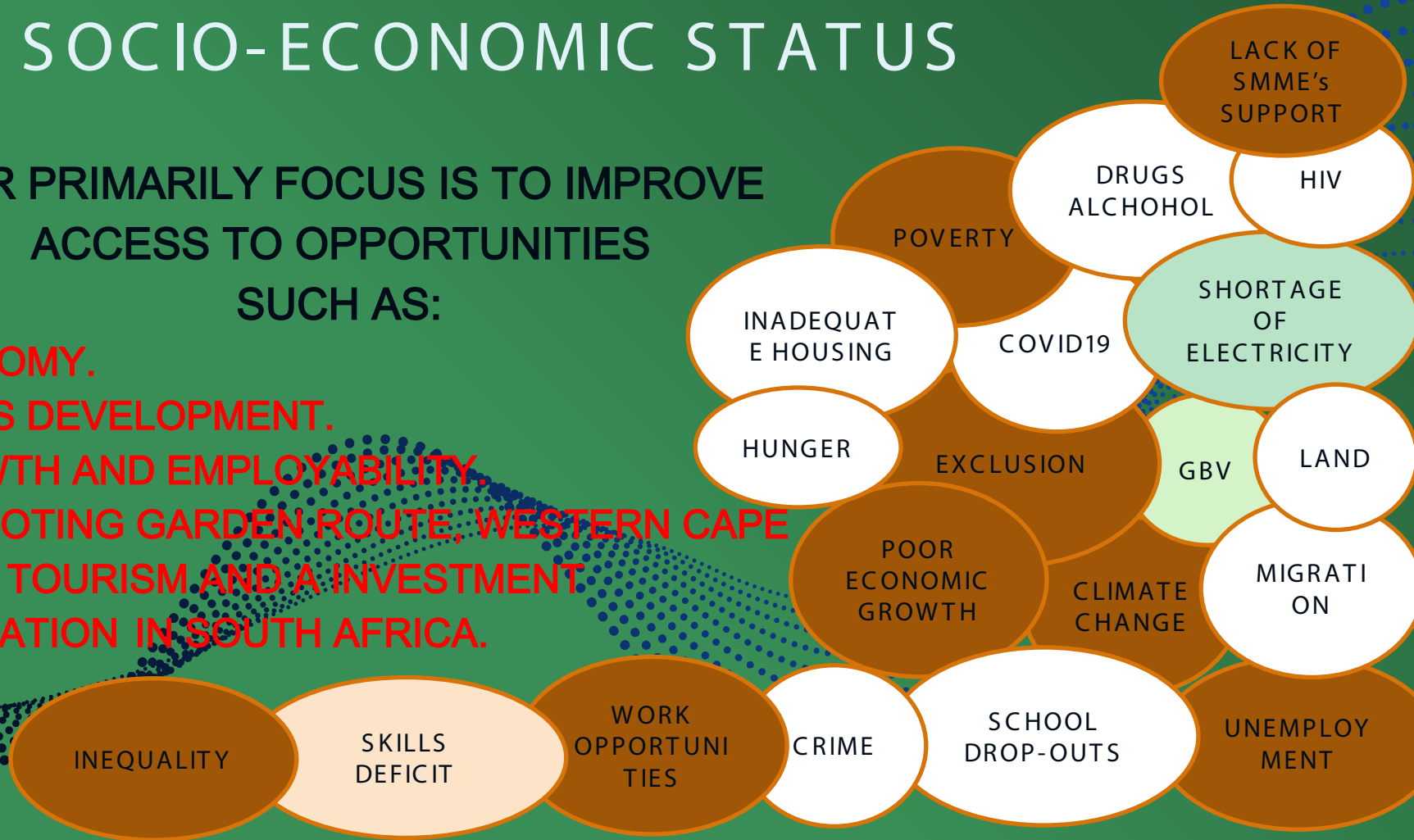
PURPOSE OF ISDF WAS TO DEVISE A STRATEGY THAT WILL PROVIDE KNYSNA MUNICIPALITY AND PRIVATE SECTOR THE OPPORTUNITY TO DEVELOP A PLANNING GUIDE THAT WILL:

- PROMOTE ECONOMIC GROWTH.
- FACILITATE JOB CREATION.
- ADDRESS POVERTY WITHIN THE GREATER KNYSNA AREA.

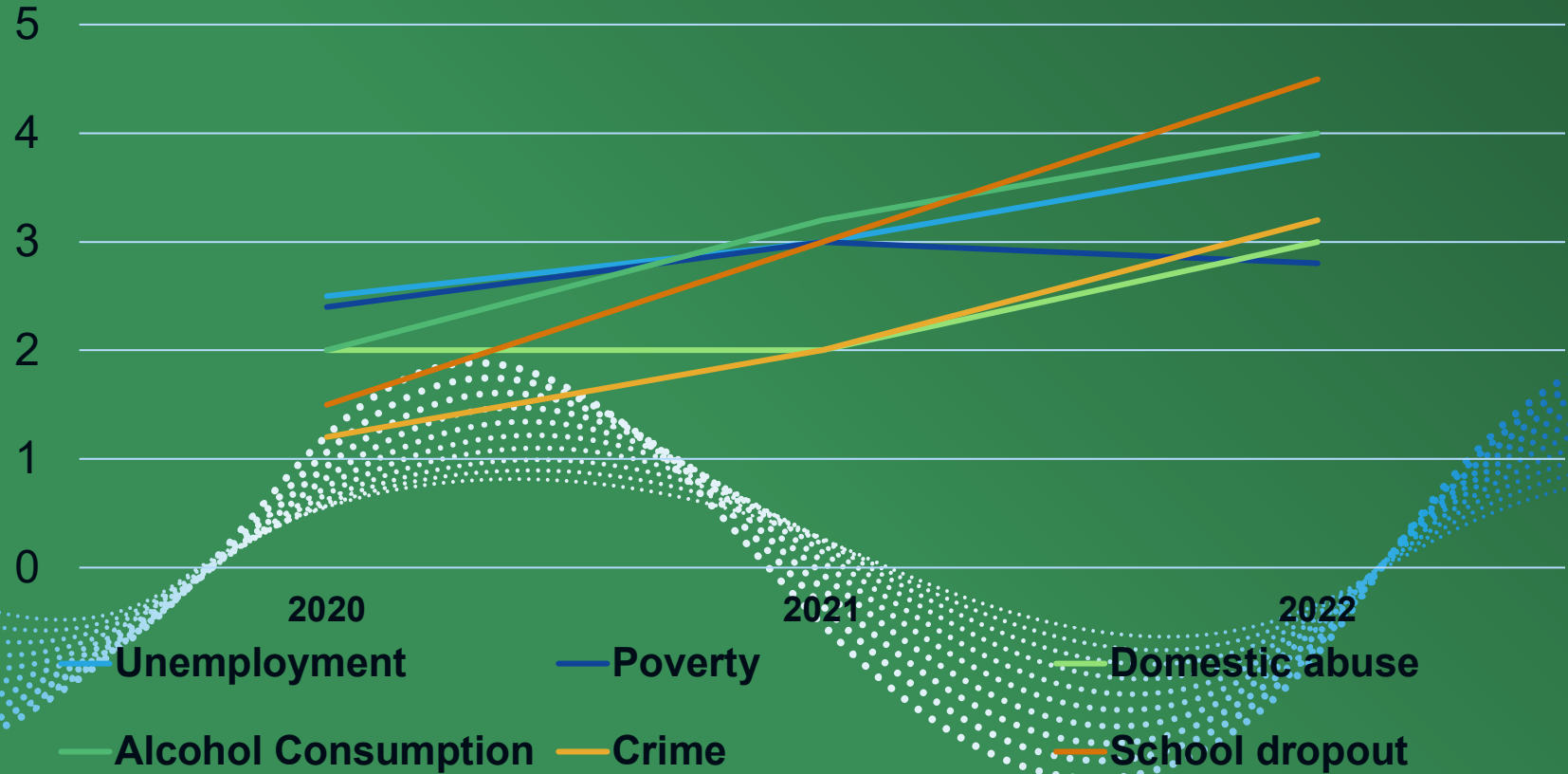
SOCIO-ECONOMIC STATUS

OUR PRIMARILY FOCUS IS TO IMPROVE
ACCESS TO OPPORTUNITIES
SUCH AS:

- ECONOMY.
- SKILLS DEVELOPMENT.
- GROWTH AND EMPLOYABILITY.
- PROMOTING GARDEN ROUTE, WESTERN CAPE
AS THE TOURISM AND A INVESTMENT
DESTINATION IN SOUTH AFRICA.



POOR ECONOMIC GROWTH'S CONTRIBUTION





**HOW ARE WE GOING TO ADDRESS
THESE SOCIO-ECONOMIC
CHALLENGES?**

ITHUBA-CENTRE

MULTI RESOURCE TRAINING AND BUSINESS HUB

INTRODUCTION

ITHUBA - CENTRE IS A MULTI RESOURCE TRAINING AND BUSINESS HUB. THIS INNOVATIVE AND SELF - SUSTAINABLE BUILDING WILL BE BUILT PRIMARILY WITH RECYCLED AND UPCYCLED MATERIAL.

THE BUILDING WILL BE AS SELF-SUSTAINABLE AS POSSIBLE. IT WILL PROVIDE MOST OF ITS WATER, ELECTRICITY OFF THE GRID AND IT WILL OPEN ITS DOORS TO THOUSANDS OF PEOPLE WHO NEEDS SKILLS, TRAINING AND BUSINESS OPPORTUNITIES .

THE BUILDING WILL HAVE A GROUND, AND FIRST FLOOR ARRANGED IN THE U-SHAPE. IT WILL HAVE A DISTINCTIVE WEST, EAST AND SOUTH WING IN THE SHAPE OF AN EMBRACE WHICH CREATES A CENTRAL ENTRANCE COURTYARD CONTAINING A COMMON AMPHITHEATRE AND GREEN SPACE.

AIMS AND OBJECTIVES are to:

- DEVELOP SUSTAINABILITY AND PROSPERITY IN DISADVANTAGED COMMUNITIES.
- CREATE EMPLOYMENT, EMPOWER THE SOCIETY, SMME'S SO THAT THEY CAN CREATE EMPLOYEMENT FOR THEMSELVES AND OTHERS.
- ENHANCE SUSTAINABILITY IN JOB CREATION.
- ENHANCE THE ECONOMIC.
- PROMOTE EDUCATION AS AN INCOME, INCREASE ACCESS TO OPPORTUNITIES AND EMPLOYABILITY.
- PROMOTE GARDEN ROUTE / WESTERN CAPE AS THE TOURISM AND A INVESTMENT DESTINATION.

THE OVERALL VISION

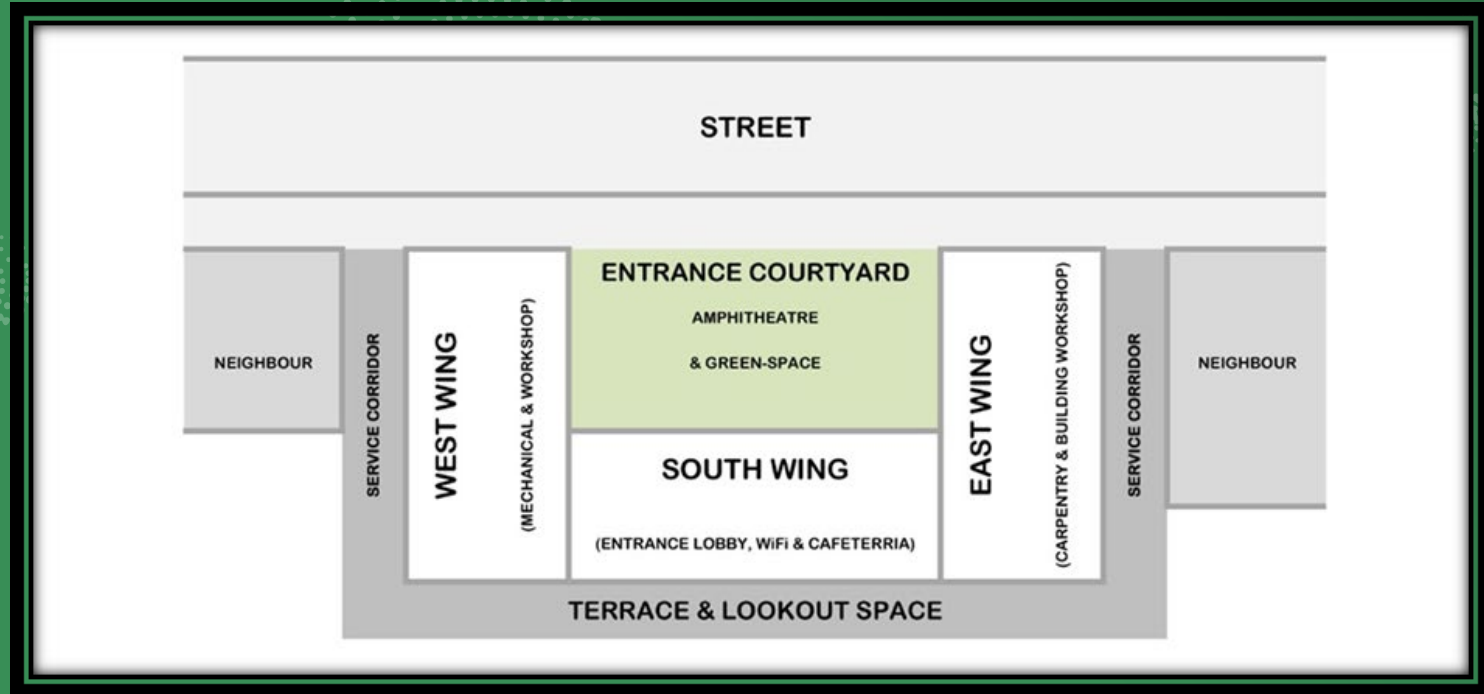
THIS MODEL IS A ON-GOING SUSTAINABLE ECO-FRIENDLY DEVELOPMENT PROJECT THAT AIMS TO ESTABLISH MANY BRANCHES INCLUDING MANUFACTURING FACTORIES AND RENEWABLE ENERGY PLANTS AROUND THE COUNTRY, TO ADDRESS SOCIO-ECONOMIC CHALLENGES. THIS PROTOTYPE IN PARTICULAR IS TO BE SET IN KNYSNA AND GARDEN ROUTE DISTRICT .

HERE LIES THE GREATEST POTENTIAL FOR EFFICIENT ECONOMIC TRANSFORMATION. OUR INITIATIVE FORESEES THE SPACE SAVING NATURE OF THE INFORMATION AGE AS A BENEFICIAL AREA OF POVERTY WHERE LACK OF SKILLS AND EMPLOYMENT ARE SEEN AS A HOTBED FOR GRASSROOTS DEVELOPMENT.

ITHUBA-CENTRE

MULTI RESOURCE TRAINING AND BUSINESS HUB

Our INNOVATIVE Hub



ITHUBA-CENTRE

MULTI RESOURCE TRAINING AND BUSINESS HUB

DISTRICT FACTORY & ENERGY PLANTS



ITHUBA-CENTRE

MULTI RESOURCE TRAINING AND BUSINESS HUB

ACCREDITED HUB OFFERINGS & TRAININGS

BUILDING AND CONSTRUCTION MANAGEMENT

YOUTH LEADERSHIP, AND GOVERNANCE

RECYCLING AND UPCYCLING INNOVATION

MECHANICS AND ROBOTICS

FARMING AND AGRICULTURE INNOVATION

IT, CODING AND SOFTWARE DEVELOPMENT

BUSINESS MENTORSHIP AND FUNDING

RENEWABLE ENERGY FACULTY

RENDER SERVICES

TOURISM EXPERIENCE

INCUBATION INITIATIVE

OTHER SERVICES:

GOVERNMENT OFFICES: HOME AFFAIRS, SASSA, DSD, SMME'S, YOUTH DESK etc.

SOCIAL SPACES: LIBRARY, CAFETERIA, BOOKSHOP, INTERNET AND YOUTH CAF É ect.

PROPOSED PARTNERS: NYDA, NHBRC, SEDA, Lottery, UCT, Taxes A&M, ect.

ITHUBA-CENTRE

MULTI RESOURCE TRAINING AND BUSINESS HUB

BUILDING AND CONSTRUCTION MANAGEMENT COURSE

ACCREDITED

60% Women - 40% Men



ITHUBA-CENTRE

MULTI RESOURCE TRAINING AND BUSINESS HUB

YOUTH LEADERSHIP AND GOVERNANCE COURSE

ACCREDITED

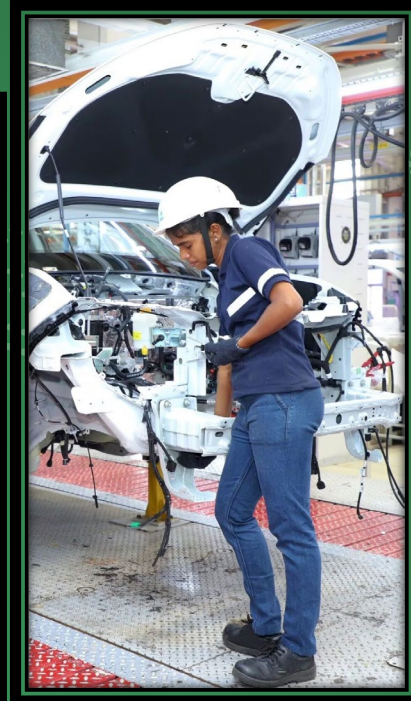
100% Youth, women and People with disabilities



ITHUBA-CENTRE

MULTI RESOURCE TRAINING AND BUSINESS HUB

MECHANICS Dismantal and Assemble COURSE ACCREDITED 60% Women / 40% Men



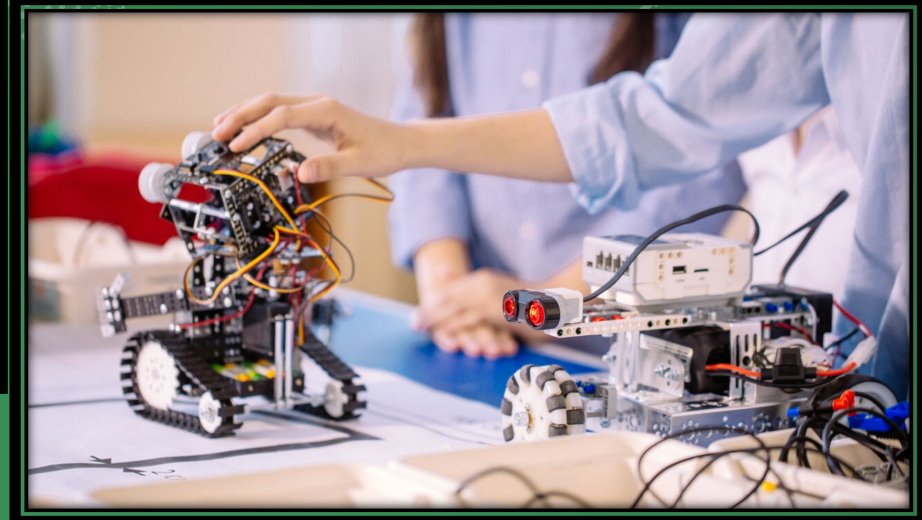
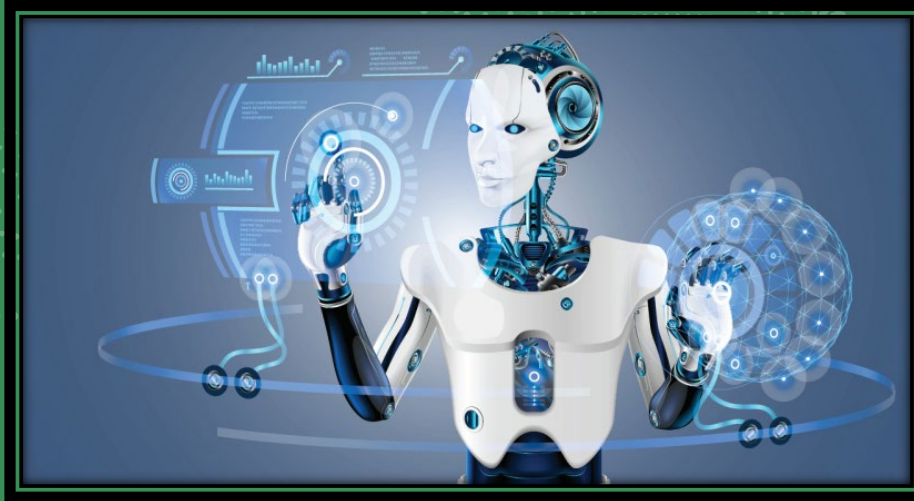
ITHUBA-CENTRE

MULTI RESOURCE TRAINING AND BUSINESS HUB

TECHNOLOGY AND ROBOTICS COURSE

ACCREDITED

60% Women - 40% Men



IT HUBA-CENTRE

MULTI RESOURCE TRAINING AND BUSINESS HUB

IT, CODING AND SOFTWARE DEVELOPING COURSE

ACCREDITED

60% Women - 40% Men

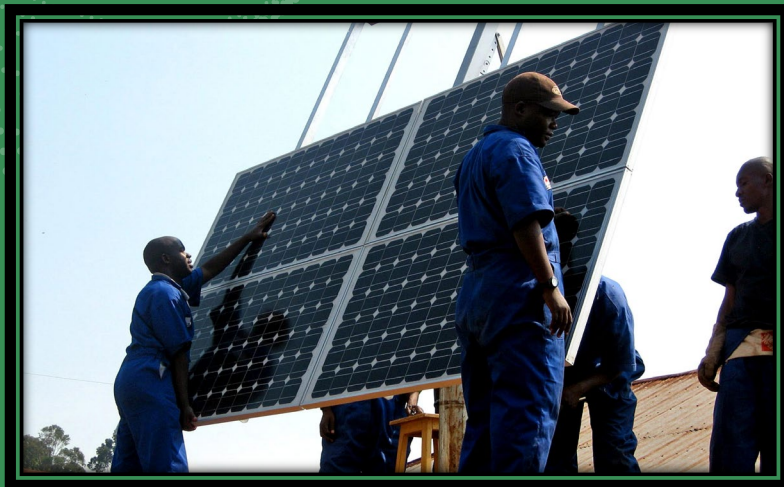


ITHUBA-CENTRE

MULTI RESOURCE TRAINING AND BUSINESS HUB

RENEWABLE ENERGY COURSE

ACCREDITED 60% Women - 40% Men



ITHUBA-CENTRE

MULTI RESOURCE TRAINING AND BUSINESS HUB

FARMING AND AGRICULTURE HYDROPONICS COURSE

ACCREDITED

60% Women - 40% Men

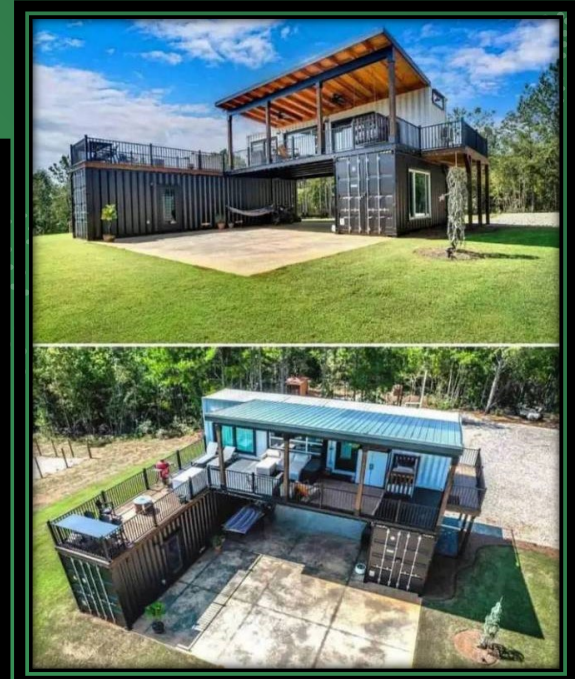


ITHUBA-CENTRE

MULTI RESOURCE TRAINING AND BUSINESS HUB

RECYCLING AND UPCYCLING TRAINING

ACCREDITED 50% Women - 50% Men



ITHUBA-CENTRE

MULTI RESOURCE TRAINING AND BUSINESS HUB

TOURISM AND TOURGUIDE TRAINING **ACCREDITED 60% Women - 40% Men**



ITHUBA-CENTRE

MULTI RESOURCE TRAINING AND BUSINESS HUB

BUSINESS MENTORSHIP AND FUNDING PROGRAMME **SUPPORT 50%Women - 50%Men**



ITHUBA-CENTRE

MULTI RESOURCE TRAINING AND BUSINESS HUB

INCUBATION PROGRAM **SUPPORT**

50%Women - 50%Men



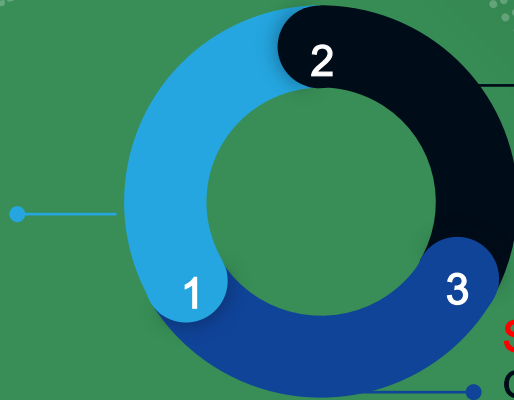
ITHUBA-CENTRE

MULTI RESOURCE TRAINING AND BUSINESS HUB

OUR PROCES IS EASY- RECRUIT, TEACH & SUPPORT.

RECYCLE AND UPCYCLE

PLASTIC, WOOD,
GLASS, STEEL AND
WASTE.



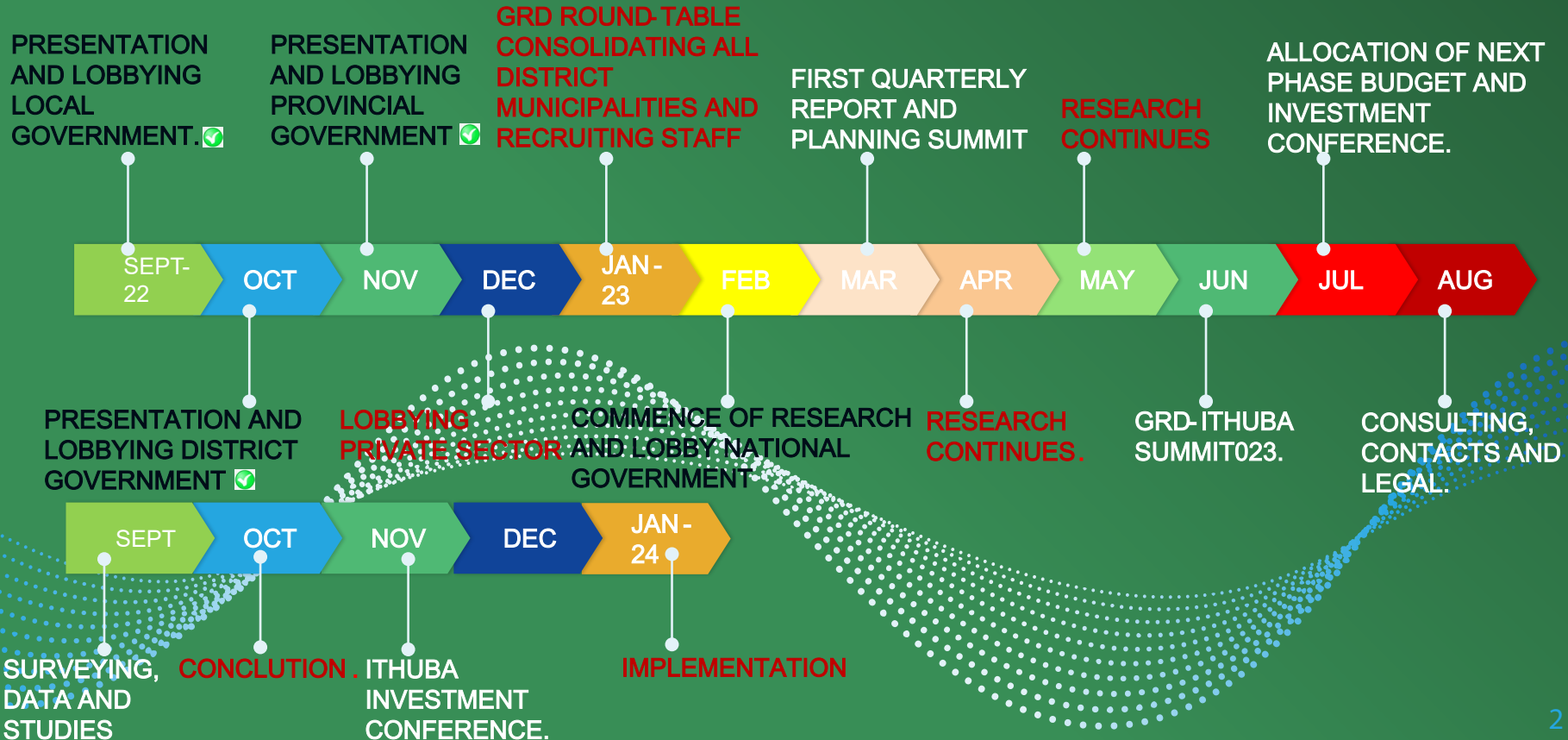
PRODUCTION AND SERVICES

INFASTRUCTURE DEVELOPMENT,
ENERGY, BUILDING BLOCKS, BRICKS,
FENCING BRICKS, PAVING BRICKS, TILES,
FURNITURE, RETAINING WALLS BRICKS,
BURGLAR BARS, WINDOWS, BUILDING
MATERIAL, TOILAT PAPER, KITCHEN
BUILD-IN, COUNTER STONES, CAR
MODENIZED MATERIAL ect.

SUPPLY

GOVERNMENT, SCHOOLS,
PRIVATE SECTOR, PUBLIC
SECTOR, FORIEGN
COUNTRIES ect

IMPLEMENTATION TIMELINE 2023



PROJECT FUNDING?

GARDEN ROUTE DISTRICT ITHUBA INVESTMENT CONFERENCE

THEME: SCIENCE TECHNOLOGY AND INNOVATIONS

DATE: 23-25 NOVEMBER 2023

HOST: KNYSNA

ORGANIZATION: YONA-YETHU INITIATIVE

PARTNER: KNYSNA MUNICIPALITY (LED OFFICE)

CONTACT DETAILS

DIRECTOR: NATHI OLIVER MABUKANE

EMAIL: YONAYETHU.INITIATIVE@GMAIL.COM

CALL: 078 631 4478

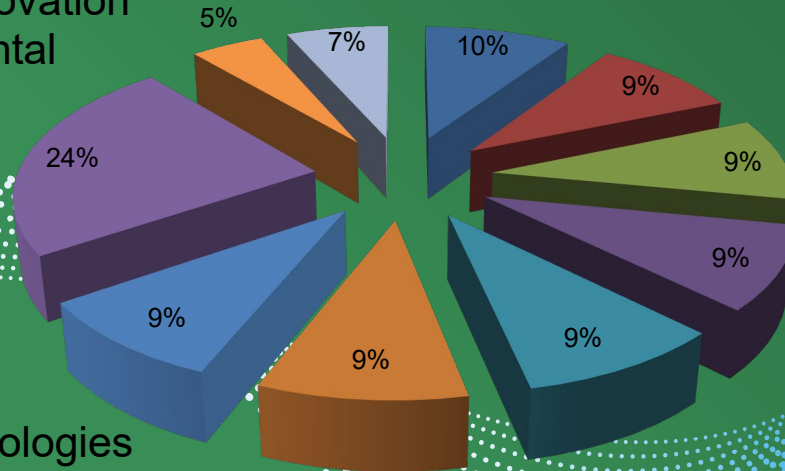


ITHUBA-CENTRE

MULTI RESOURCE TRAINING AND BUSINESS HUB

PROPOSED STAKEHOLDERS FOR ITHUBA HUB

- Human settlement
- Hihger Education, Sience and Innovation
- Forestry, Fiheries and Environmental
- Small business development
- Public works and Infrastructure
- Presidency
- Social development
- Trade, Industry and Competition
- Tourism
- Private Investor
- Communications and digital technologies
- Local Gov
- Provincial Gov



ITHUBA-CENTRE

MULTI RESOURCE TRAINING AND BUSINESS HUB

PROJECT ENDORSED BY



**EXECUTIVE MAYOR
AUBREY TSENGWA
KNYSNA MUNICIPALITY**



**EXECUTIVE MAYOR
MEMORY BOOYSEN
GARDEN ROUTE DISTRICT**



**PREMIER
ALEN WINDE
WESTERN CAPE GOV**

THANKS!

ANY QUESTIONS.

YOU CAN FIND US AT:

: Yonayethu.initiative@gmail.com



: YONAYETHU.ORG



: +27 (0) 78 631 4478



: 05 GREENFIELD

KNYSNA

6570

WESTERN CAPE

SOUTH AFRICA

